

Component Replacement

- electrical -



Xperia™ ZL
C6502, C6503, C6506 & L35h

CONTENTS

1 Replaceable Components 3

2 Component Placing..... 5

3 Additional Repair info 6

4 Revision History 11

For general information about electrical repair related issues, refer to 1220-1336: Generic Repair Manual - electrical

Test after electrical replacement: refer to 1273-1772 Mechanical Test Instruction

Do not remove shield can lids (Heat pasta are added and RF performance will be damaged)

1 Replaceable Components

EXPLANATION OF ABBREVIATIONS USED IN THE COLUMN 'COMMENTS' BELOW

COMPONENT LOCATION

P = Primary side

S = Secondary side

REPAIR METHOD

HA = Hot Air (removal & mounting)

ST = Soldering Tool (removal & mounting)

HA/ST = Hot Air for removal - Soldering Tool for mounting

BGA = BGA Station

BH = Bottom Heater

ADDITIONAL INFORMATION

⇒1 (2,3,4, etc.) = Proceed to 'Additional Repair Info' for further instructions in the indicated section(s).

Position	Component	Part no.	Comments
C8128	Capacitor Ceramic 10.0 uF 6.3 V K0402	1257-4059	P HA+BH ⇒1
L2201	Filter 220ohm 0603 2A 0.05ohm Bead	1001-1896	S HA+BH ⇒2
L5100	Filter 1.0 GHz 0402	1000-2617	P HA+BH ⇒3
L5101	Filter 1.0 GHz 0402	1000-2617	P HA+BH ⇒3
R1300	Resistor 0.01 Ohm +/-1% 200.0 mW (1.6x0.	1238-2147	P HA+BH ⇒4
S2000	Input Switch Push/Shielded top push swit	1200-5025	P HA+BH ⇒5
V7800	LED White 2.04x1.64x0.75mm Flash LED Hig	1230-9540	P HA+BH ⇒6
X1014	Conn Leaf Spring Plug 1p Antenna/GND Spr	1239-2123	P HA+BH ⇒7
X1015	Conn Leaf Spring Plug 1p Antenna/GND Spr	1239-2123	P HA+BH ⇒7
X1300	Conn BtB Receptacle 3p Battery mating he	1252-4072	P HA+BH ⇒8
X2200	Conn USB micro B Receptacle 5p Conn USB	1264-0336	S HA+BH or BGA ⇒9
X2800	Conn Leaf Spring Plug 1p Antenna/GND Spr	1239-2123	S HA+BH ⇒10
X2801	Conn Coax Receptacle 1p	1237-5326	P HA+BH ⇒11
X2803	Conn Coax Receptacle 1p	1237-5326	P HA+BH ⇒12
X4000	Card Conn SIM MicroSIM Push-push w/o tra	1262-8669	P HA+BH or BGA ⇒13
X4100	Conn Other 0p Card Conn Micro SD	1262-2506	P HA+BH or BGA ⇒14
X5102	Conn WtB Receptacle 2p	1206-4855	P HA+BH ⇒15
X8000	Conn Leaf Spring Plug 1p Antenna/GND Spr	1239-2123	P HA+BH ⇒16
X8001	Conn Coax Receptacle 1p	1237-5326	P HA+BH ⇒17
X8002	Conn Leaf Spring Plug 1p Antenna/GND Sp	1239-2123	P HA+BH ⇒18
X8003	Conn Leaf Spring Plug 1p Antenna/GND Spr	1239-2123	P HA+BH ⇒18
X8005	Conn Leaf Spring Plug 1p Antenna/GND Spr	1239-2123	P HA+BH ⇒16
X8400	Conn Leaf Spring Plug 1p Antenna/GND Spr	1239-2123	P HA+BH ⇒19
X8401	Conn Leaf Spring Plug 1p Antenna/GND Spr	1239-2123	P HA+BH ⇒19

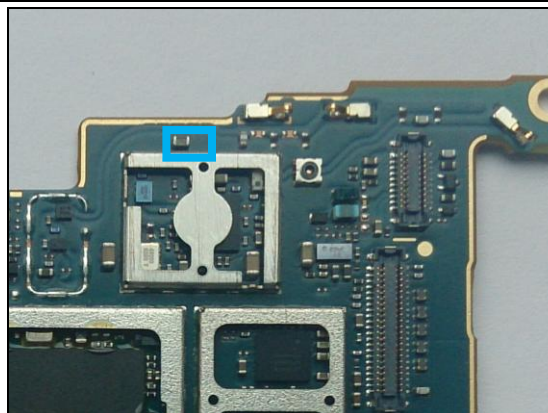


3 Additional Repair info

1

C8128

Replace if short circuit (WLAN problems or high power consumption when WLAN are selected)

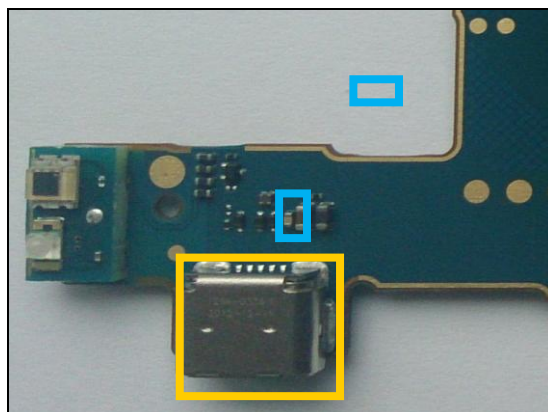


2

L2201

Replace if open circuit (Charging from USB not working)

Protect the USB connector with capton tape!

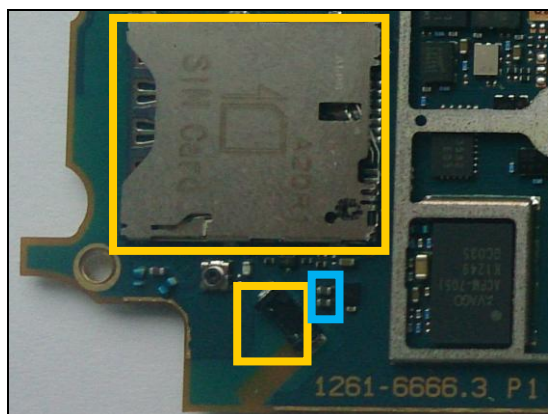


3

L5000, L5001

Replace if open circuit (Vibrator not working)

Protect the SIM and BtB connectors with capton tape!

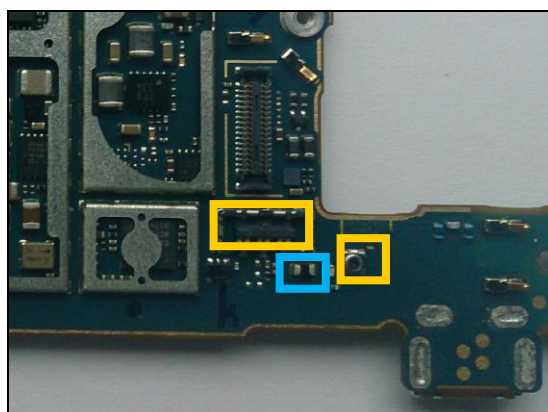


4

R1300

Replace if open circuit (Phone dead)

Protect the BtB and Coax connectors with capton tape!

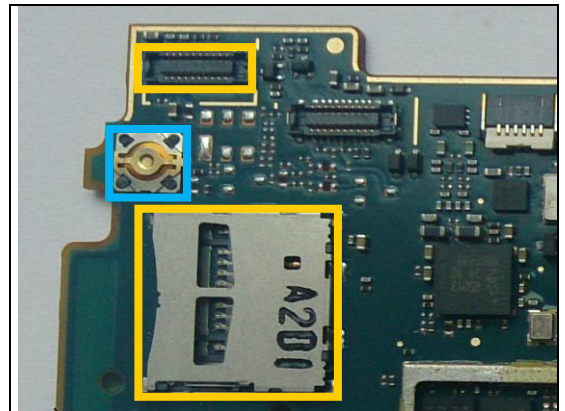


Repair Actions: Additional Repair Info

5

S2000

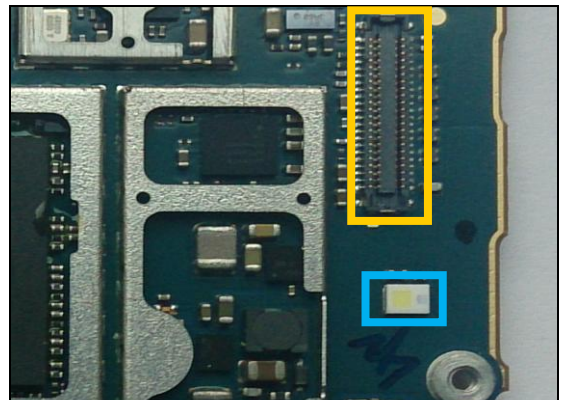
Replace if mechanical damaged (Reset not working)
Protect the SD and BtB connectors with capton tape!



6

V7800

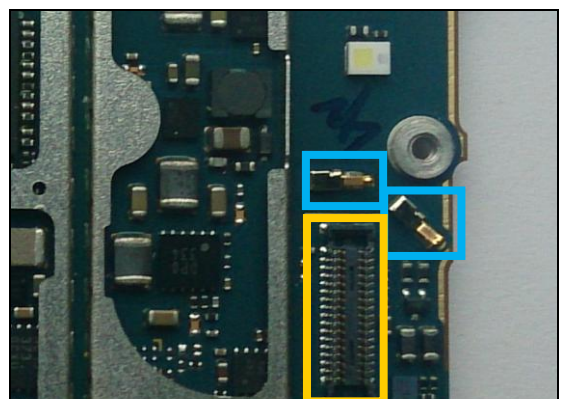
Replace if Flash LED not working
Protect the BtB connector with capton tape!



7

X1014, X1015

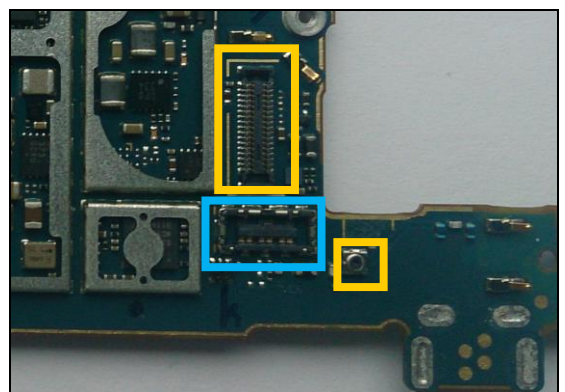
Replace if mechanical damaged (Loudspeaker not working)
Protect the BtB connector with capton tape!



8

X1300

Replace if mechanical damaged. (Phone dead or power off)
Protect the BtB and Coax connectors with capton tape!



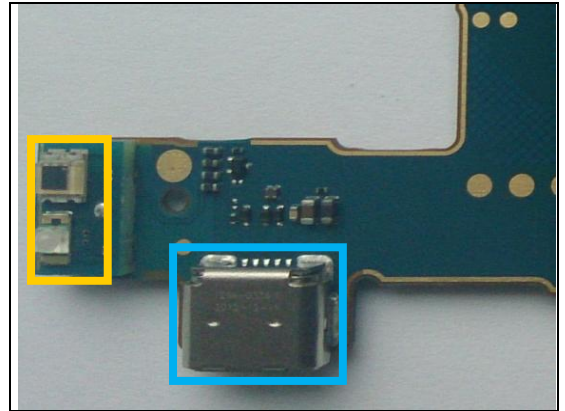
Repair Actions: Additional Repair Info

9

X2200

Replace if mechanical damaged (USB charger or data transfer not working)

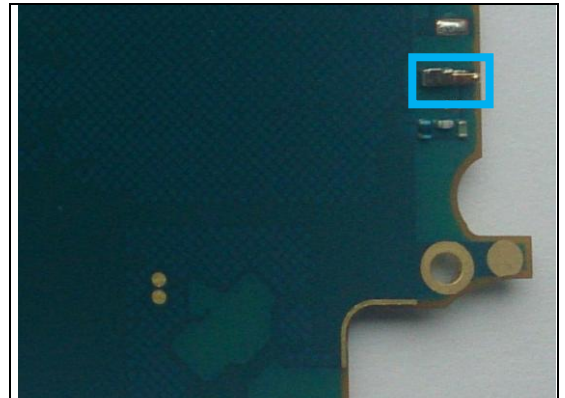
Protect the Sensors with capton tape!



10

X2800

Replace if mechanical damaged. (No or bad network, main antenna)

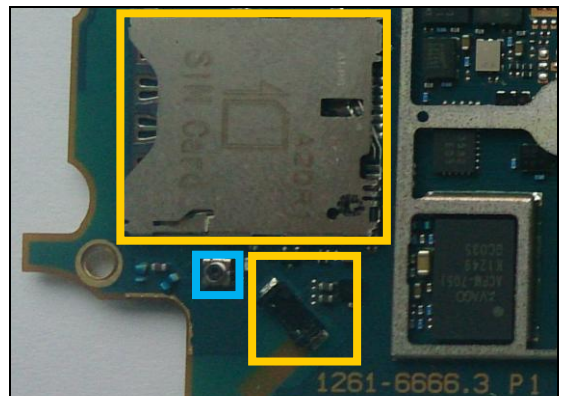


11

X2801

Replace if open circuit 1-2 (No or bad network, main antenna)

Protect the SIM and BtB connectors with capton tape!

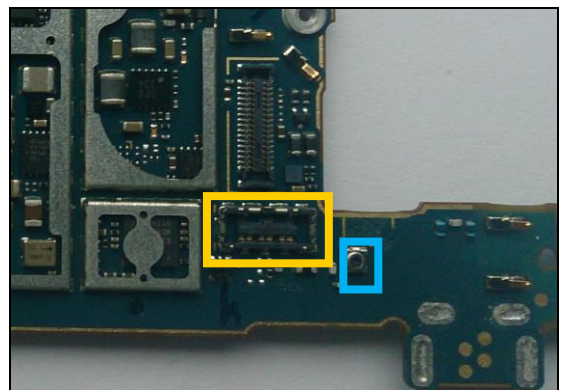


12

X2803

Replace if open circuit 1-2 (Bad network, secondary antenna)

Protect the BtB connector with capton tape!



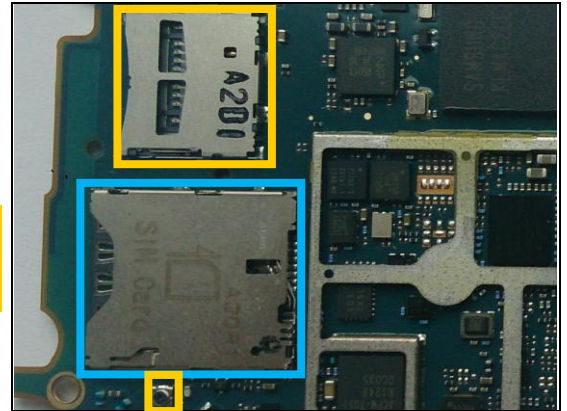
Repair Actions: Additional Repair Info

13

X4000

Replace if mechanical damaged (No network, restart, No SIM card inserted)

Protect the SD and Coax connectors with capton tape!

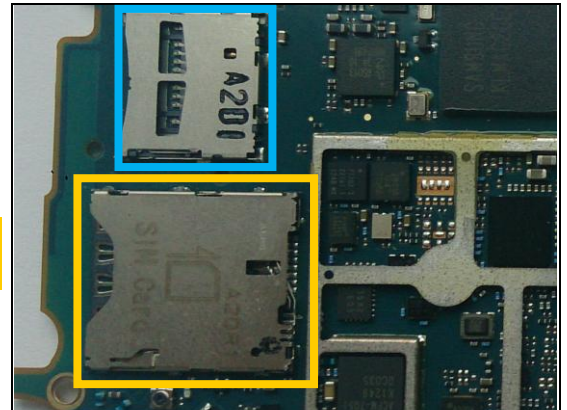


14

X4100

Replace if mechanical damaged (No SD card)

Protect the SIM connector with capton tape!

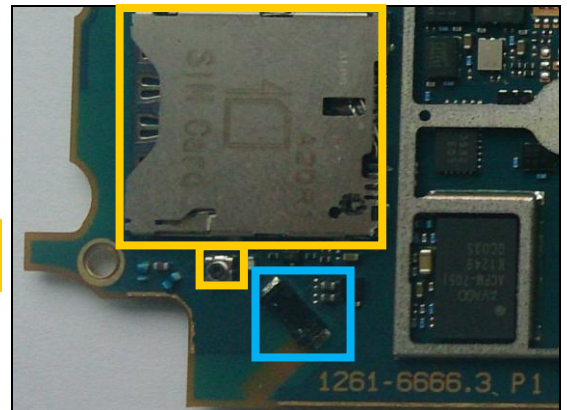


15

X5102

Replace if mechanical damaged (Vibrator not working)

Protect the SIM and Coax connectors with capton tape!

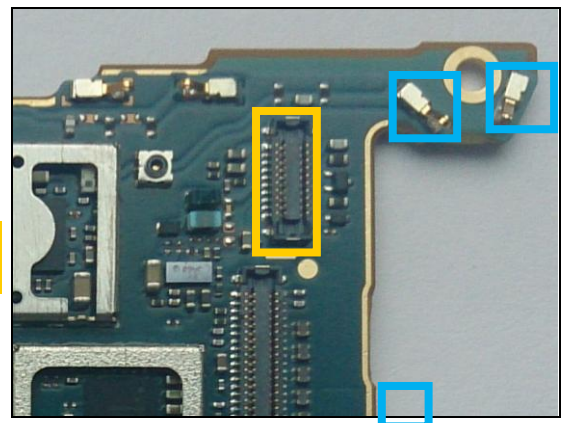


16

X8000, X8005

Replace if mechanical damaged (no or bad WLAN/ BT)

Protect the BtB connector with capton tape!

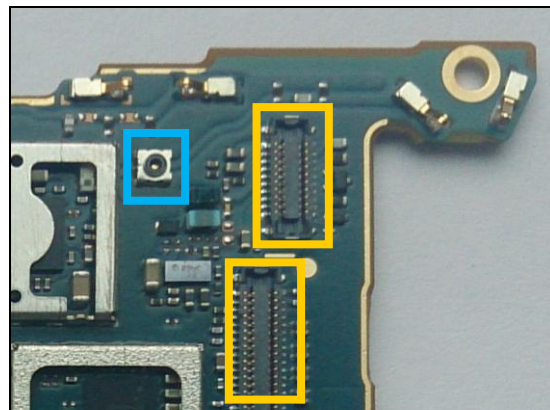


Repair Actions: Additional Repair Info

17

X8001

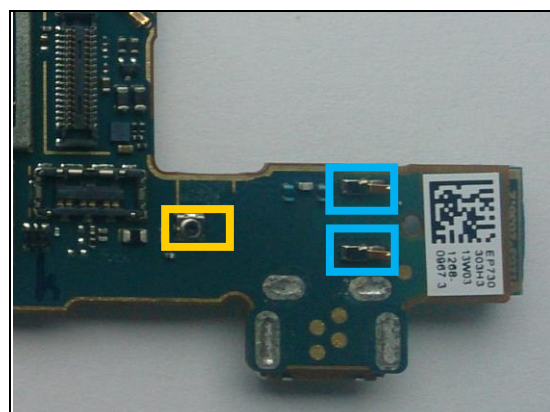
*Replace if open circuit 1-2 (no or bad WLAN/ BT)
Protect the BtB connectors with capton tape!*



18

X8002, X8003

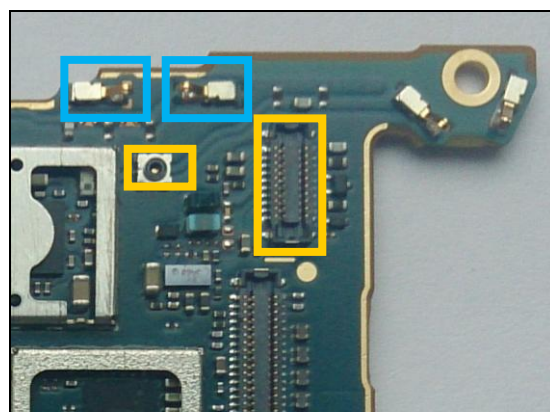
*Replace if mechanical damaged (Bad network, secondary antenna)
Protect the Coax connector with capton tape!*



19

X8400, X8401

*Replace if mechanical damaged (no or bad GPS)
Protect the BtB and Coax connectors with capton tape!*



4 Revision History

Rev.	Date	Changes / Comments
1	2014-04-16	Initial release

